

SWL 900

POWERED by
HONDA™

Only model 900 ST



MORE INFO



SWL 900 ST

MORE INFO



SWL 900 ET

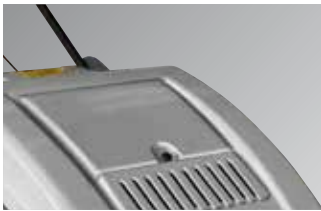
CHARACTERISTICS

• Ideal for medium and large surfaces • Large filter surface with electric filter shaker (ET model) • Manual filter shaker (ST model) • Side brush raising control • Suction switch off • Flap raise system • Panel filter in horizontal position • Main brush pressure regulation • Indirect back collection • Quick main brush release • Long life elastic belts • Reclining handle • Suction selection lever • Traction lever • Antistatic device • Wide collector tank • Heavy duty steel frame • Side brush mechanical engagement • Battery and battery charger not included.

TECHNICAL DATA

	SWL 900 ET	SWL 900 ST
code	39002-00071	39002-00072
main brush width	710mm / 27,95 inc	710mm / 27,95 inc
main brush + 1 side brush width	880mm / 34,64 inc	880mm / 34,64 inc
collector tank	55 lt / 14,53 gal	55 lt / 14,53 gal
max working capacity	3700m ² /h-39826 ft ² /h	3700m ² /h-39826 ft ² /h
traction	mechanical	mechanical
max speed	4 km/h-2,49mile/h	4 km/h-2,49mile/h
motor type / power	12V / 400W	Honda 5,5 HP / 3,4 kW
filtering surface	3,02 m ² / 32,50 ft ²	3,02 m ² / 32,50 ft ²
pressure on the brushes	adjustable	adjustable
filter shaker	electric	manual
dimension (cm)/weight	126x83x85 / 89 kg	126x83x85 / 97 kg

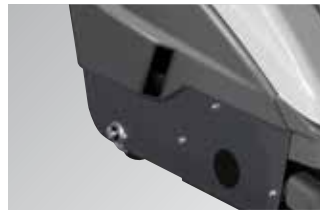
PLUS



Large filter surface with electric filter shaker (ET model), manual filter shaker (ST model)



Side brush raising control. Main brush pressure regulation and quick main brush release



Heavy duty steel frame with 360° front wheel and long life elastic belts



Control panel with: side brush raising control, suction switch off, flap raise system, battery level (ET model), on/off key (ET model)

STANDARD EQUIPMENT

 <ul style="list-style-type: none"> • 00080-04128 PP SWL 900 ET • 00080-04131 PP-Mixed steel SWL 900 ST 	 <ul style="list-style-type: none"> • 00080-04124 PP 	 <ul style="list-style-type: none"> • 00070-00428 paper filter 14 µm 		
--	--	--	--	--

OPTIONAL

 <ul style="list-style-type: none"> • 00039-01771 Side brush protection 	 <ul style="list-style-type: none"> • 00070-00432 PE panel filter 5µm 	 <ul style="list-style-type: none"> • 00070-00434 HEPA panel filter 	<ul style="list-style-type: none"> • 10001-07818 Trolley for collector tank set 	<ul style="list-style-type: none"> model ET: • 00055-00149 Tubular battery pb-acid - 12V 118Ah C5
<ul style="list-style-type: none"> model ET: • 00055-00130 GEL Battery 12 MFP 105 - 12V 105Ah C5 	<ul style="list-style-type: none"> model ET: • 00056-00068 - 12V-13A 100-240V 50-60 Hz 			